

# Band Scales

Trombone

1. Bb Scale

Musical notation for the Bb scale in bass clef, common time. The scale consists of 11 notes: Bb, C, D, Eb, F, G, Ab, Bb, C, D, Eb. Fingerings are indicated by numbers 1 through 2 above the notes.

2. C Scale

Musical notation for the C scale in bass clef, common time. The scale consists of 11 notes: C, D, Eb, F, G, Ab, Bb, C, D, Eb, F. Fingerings are indicated by numbers 1 through 4 above the notes.

3. Ab Scale

Musical notation for the Ab scale in bass clef, common time. The scale consists of 11 notes: Ab, Bb, C, D, Eb, F, G, Ab, Bb, C, D. Fingerings are indicated by numbers 1 through 5 above the notes.

4. Eb Scale

Musical notation for the Eb scale in bass clef, common time. The scale consists of 11 notes: Eb, F, G, Ab, Bb, C, D, Eb, F, G, Ab. Fingerings are indicated by numbers 1 through 3 above the notes.

5. Db Scale

Musical notation for the Db scale in bass clef, common time. The scale consists of 11 notes: Db, Eb, F, G, Ab, Bb, C, Db, Eb, F, G. Fingerings are indicated by numbers 1 through 5 above the notes.

6. F Scale

Musical notation for the F scale in bass clef, common time. The scale consists of 11 notes: F, G, Ab, Bb, C, D, Eb, F, G, Ab, Bb. Fingerings are indicated by numbers 1 through 6 above the notes.

7. G Scale

Musical notation for the G scale in bass clef, common time. The scale consists of 11 notes: G, Ab, Bb, C, D, Eb, F, G, Ab, Bb, C. Fingerings are indicated by numbers 1 through 7 above the notes.

# TROMBONE SCALES: Helpful Hints.....

(use this side of the sheet to see if you have them memorized...)

1. **Bb** Scale

**BE** Flat (Bb and Eb) Band Scale

2. **C** Scale

**Common** (all natural) E=2, A=2, B = 4

3. **Ab** Scale

**Alphabet, BEAD** (Bb, Eb, Ab, & Db=5)

4. **Eb** Scale

The **3-1** Scale! (314-3131313, etc.)

5. **Db** Scale

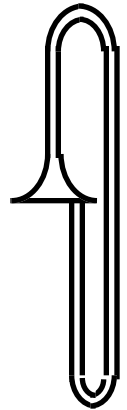
the **Phone #** scale! (531-531 32)

6. **F** Scale

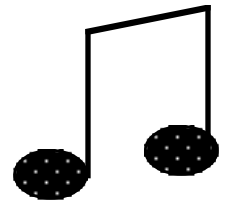
**one Flat** w/cool pattern! low6421-6421

7. **G** scale

**Gee**, this scale is wierd... (Low4,2,7,etc. F=5th)



- Memorize each of the **HINTS** listed above.
- Think of the **alphabet** as you play each scale.
- Don't EVER think of a note as it's "**enharmonic**" when doing a scale!!!  
(...yes, Gb = F# , but when you play the Db scale, think of it as a Gb or it can really "mess you up...")
- Play through your scales **daily**. 3 minutes daily will pay huge dividends!!
- See if you can memorize ONE each week. (In 7 weeks, you could be done!!)

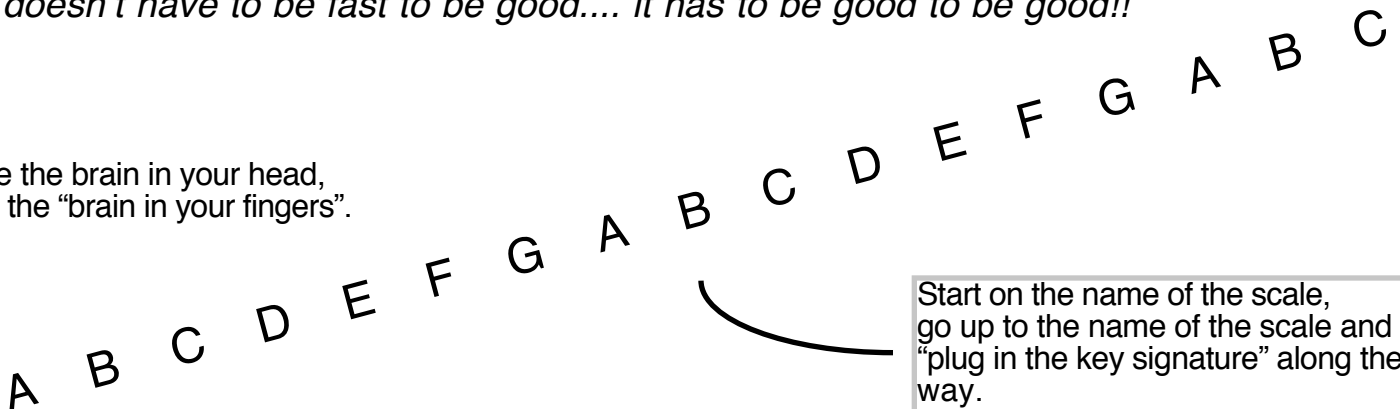


*Finally,*

Don't worry about playing them FAST..... play them WELL, with a good sound and good technique.

*"It doesn't have to be fast to be good.... it has to be good to be good!!"*

Use the brain in your head,  
not the "brain in your fingers".



Start on the name of the scale,  
go up to the name of the scale and  
"plug in the key signature" along the  
way.