


Band Scales

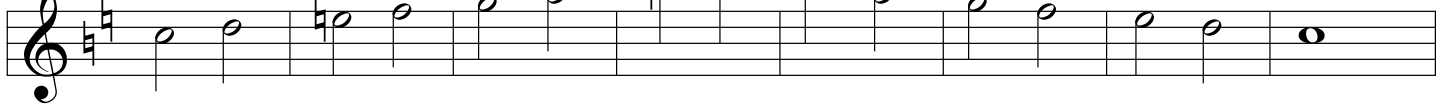
Flute

1. Bb Scale




Musical notation for the Bb Scale in treble clef, 4/4 time. The scale consists of 12 measures: C4 (half), C4-Bb4 (quarter), Bb4-A4 (quarter), A4-G4 (quarter), G4-F4 (quarter), F4-E4 (quarter), E4-D4 (quarter), D4-C4 (quarter), C4-Bb4 (quarter), Bb4-A4 (quarter), A4-G4 (quarter), G4-F4 (quarter), F4-E4 (quarter), E4-D4 (quarter), D4-C4 (quarter), C4 (half).

2. C Scale



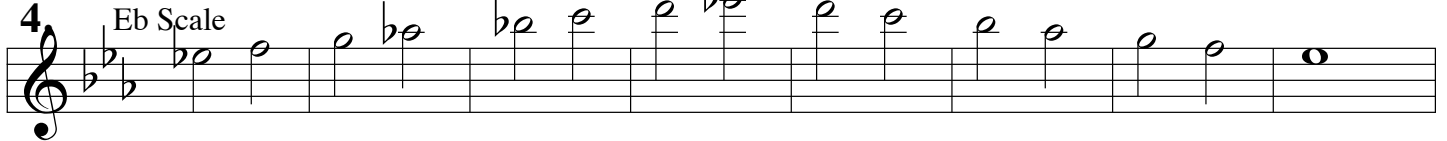
Musical notation for the C Scale in treble clef, 4/4 time. The scale consists of 12 measures: C4 (half), C4-B4 (quarter), B4-A4 (quarter), A4-G4 (quarter), G4-F4 (quarter), F4-E4 (quarter), E4-D4 (quarter), D4-C4 (quarter), C4-B4 (quarter), B4-A4 (quarter), A4-G4 (quarter), G4-F4 (quarter), F4-E4 (quarter), E4-D4 (quarter), D4-C4 (quarter), C4 (half).

3. Ab Scale




Musical notation for the Ab Scale in treble clef, 4/4 time. The scale consists of 12 measures: C4 (half), C4-Bb4 (quarter), Bb4-A4 (quarter), A4-G4 (quarter), G4-F4 (quarter), F4-E4 (quarter), E4-D4 (quarter), D4-C4 (quarter), C4-Bb4 (quarter), Bb4-A4 (quarter), A4-G4 (quarter), G4-F4 (quarter), F4-E4 (quarter), E4-D4 (quarter), D4-C4 (quarter), C4 (half).

4. Eb Scale



Musical notation for the Eb Scale in treble clef, 4/4 time. The scale consists of 12 measures: C4 (half), C4-Bb4 (quarter), Bb4-A4 (quarter), A4-G4 (quarter), G4-F4 (quarter), F4-E4 (quarter), E4-D4 (quarter), D4-C4 (quarter), C4-Bb4 (quarter), Bb4-A4 (quarter), A4-G4 (quarter), G4-F4 (quarter), F4-E4 (quarter), E4-D4 (quarter), D4-C4 (quarter), C4 (half).

5. Db Scale



Musical notation for the Db Scale in treble clef, 4/4 time. The scale consists of 12 measures: C4 (half), C4-Bb4 (quarter), Bb4-A4 (quarter), A4-G4 (quarter), G4-F4 (quarter), F4-E4 (quarter), E4-D4 (quarter), D4-C4 (quarter), C4-Bb4 (quarter), Bb4-A4 (quarter), A4-G4 (quarter), G4-F4 (quarter), F4-E4 (quarter), E4-D4 (quarter), D4-C4 (quarter), C4 (half).

6. F Scale



Musical notation for the F Scale in treble clef, 4/4 time. The scale consists of 12 measures: C4 (half), C4-B4 (quarter), B4-A4 (quarter), A4-G4 (quarter), G4-F4 (quarter), F4-E4 (quarter), E4-D4 (quarter), D4-C4 (quarter), C4-B4 (quarter), B4-A4 (quarter), A4-G4 (quarter), G4-F4 (quarter), F4-E4 (quarter), E4-D4 (quarter), D4-C4 (quarter), C4 (half).

7. G Scale



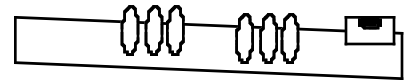
Musical notation for the G Scale in treble clef, 4/4 time. The scale consists of 12 measures: C4 (half), C4-B4 (quarter), B4-A4 (quarter), A4-G4 (quarter), G4-F4 (quarter), F4-E4 (quarter), E4-D4 (quarter), D4-C4 (quarter), C4-B4 (quarter), B4-A4 (quarter), A4-G4 (quarter), G4-F4 (quarter), F4-E4 (quarter), E4-D4 (quarter), D4-C4 (quarter), C4 (half).

FLUTE SCALES: Helpful Hints.....

(use this side of the sheet to see if you have them memorized...)

1. **Bb** Scale

BE Flat (Bb and Eb) Band Scale



2. **C** Scale

Common (all natural) (no flats)

3. **Ab** Scale

Alphabet, BEAD (Bb, Eb, Ab, & Db = 0)

4. **Eb** Scale

thrEE Flats! (Bb, Eb, & Ab)

5. **Db** Scale

the **YIKES** scale! (Bb, Eb, Ab, Db=0, Gb = f#)

for solo festival, you may opt to play the D scale in place of Db. the D scale has 2 #'s (F# & C#)

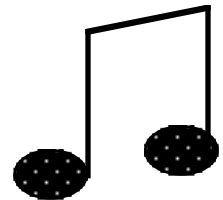
6. **F** Scale

one Flat, and that's a Bb. (E's are natural!)

7. **G** scale

Gee, there's an F# in this scale

- Memorize each of the **HINTS** listed above.
- Think of the **alphabet** as you play each scale.
- Don't EVER think of a note as it's "**enharmonic**" when doing a scale!!!
(...yes, Gb = F# , but when you play the Db scale, think of it as a Gb or it can really "mess you up...")
- Play through your scales **daily**. 3 minutes daily will pay huge dividends!!
- See if you can memorize ONE each week. (In 7 weeks, you could be done!!)

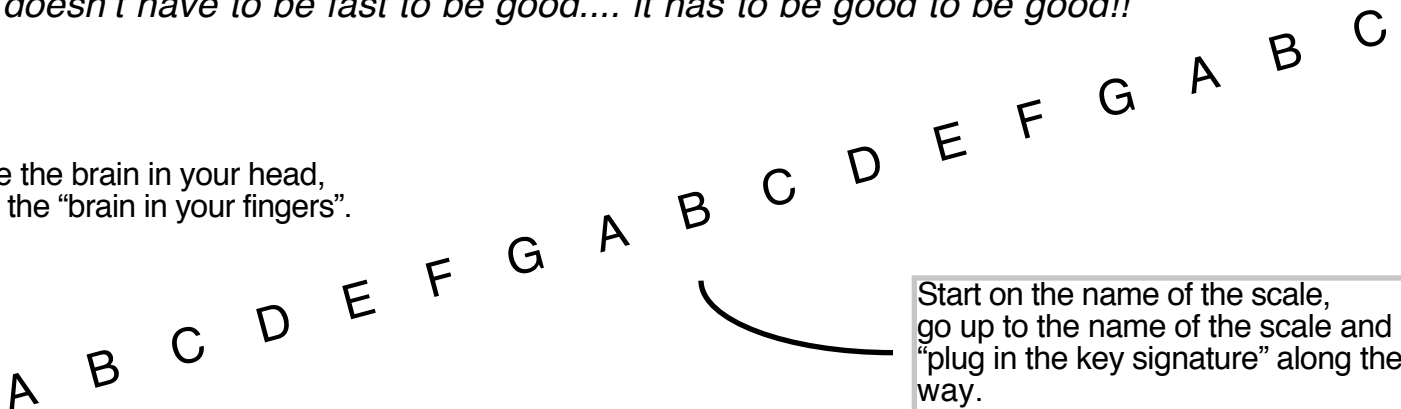


Finally,

Don't worry about playing them FAST..... play them WELL, with a good sound and good technique.

"It doesn't have to be fast to be good.... it has to be good to be good!!"

Use the brain in your head,
not the "brain in your fingers".



Start on the name of the scale,
go up to the name of the scale and
"plug in the key signature" along the
way.